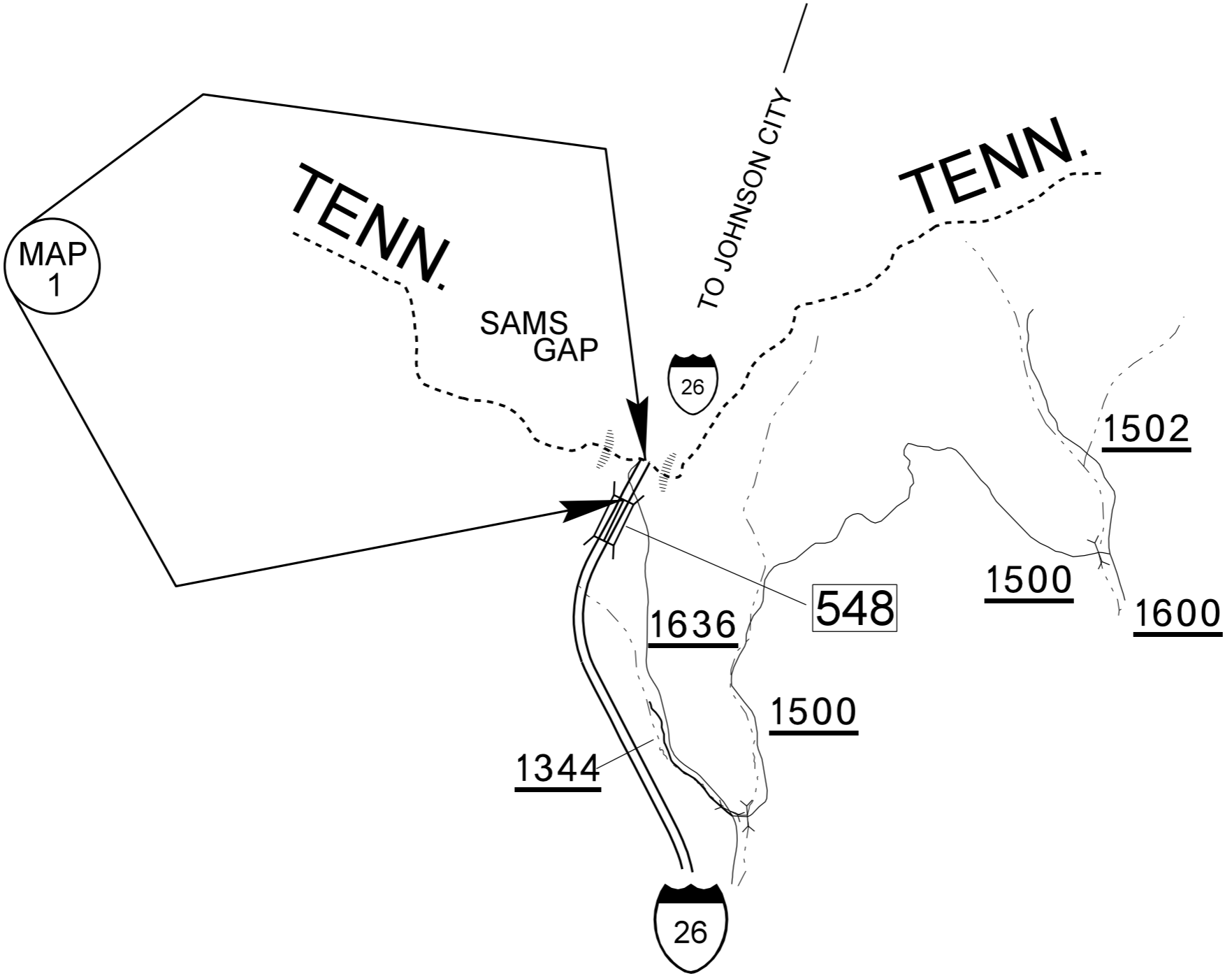
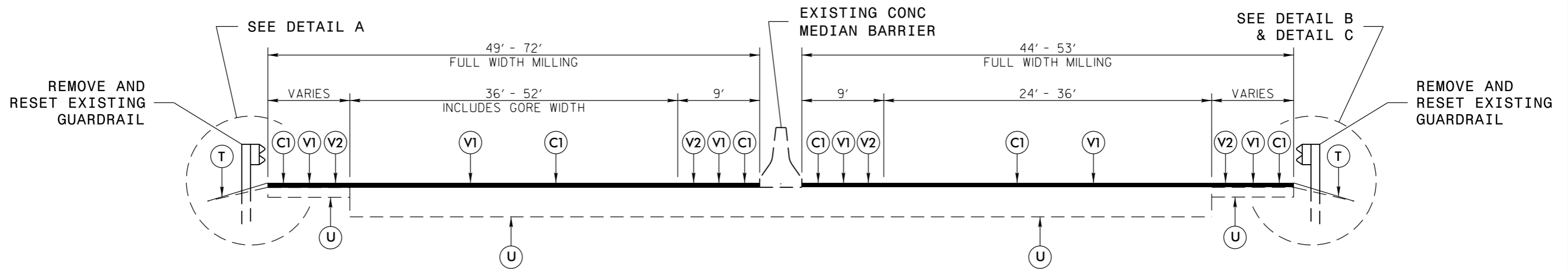


PROJECT NO.	SHEET NO.	TOTAL NO.
52031.3.1	1	7



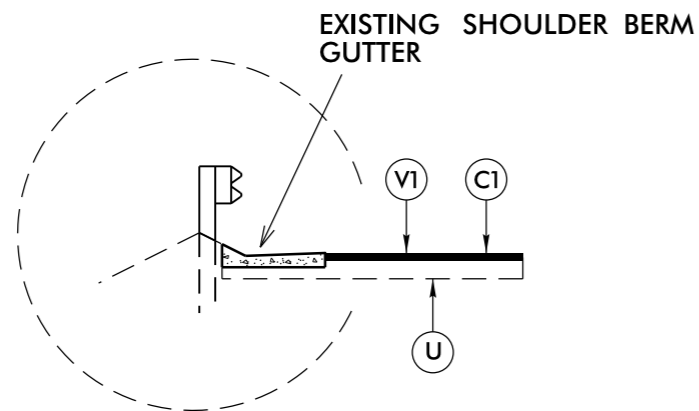
***MADISON COUNTY***

PROJECT NO.	SHEET NO.	TOTAL NO.
52031.3.1	2	7

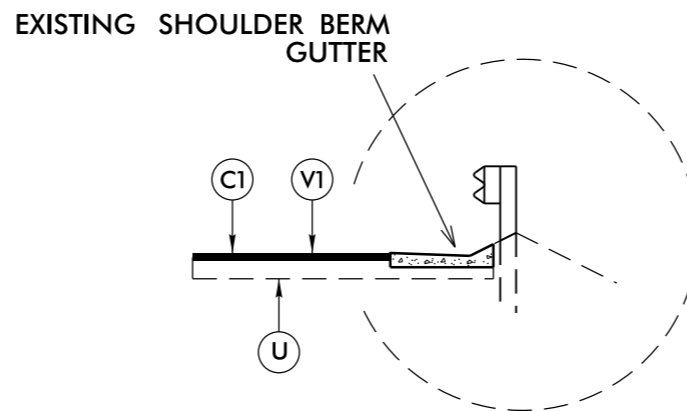


**TYPICAL SECTION NO. 1**

CLIP/CUT SHOULDERS PER NCDOT STANDARD  
DRAWING 560.01 & 560.02  
BEFORE RE-INSTALLING GUARDRAIL  
IN AREAS AS DIRECTED BY ENGINEER



**DETAIL A**  
VARIOUS LOCATIONS

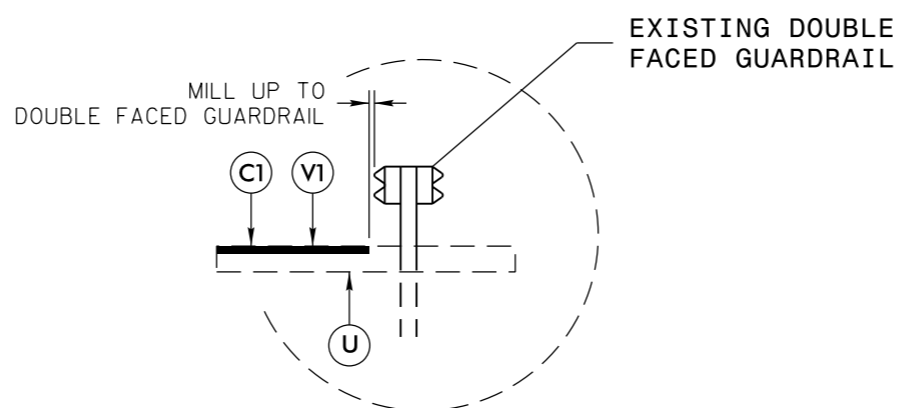
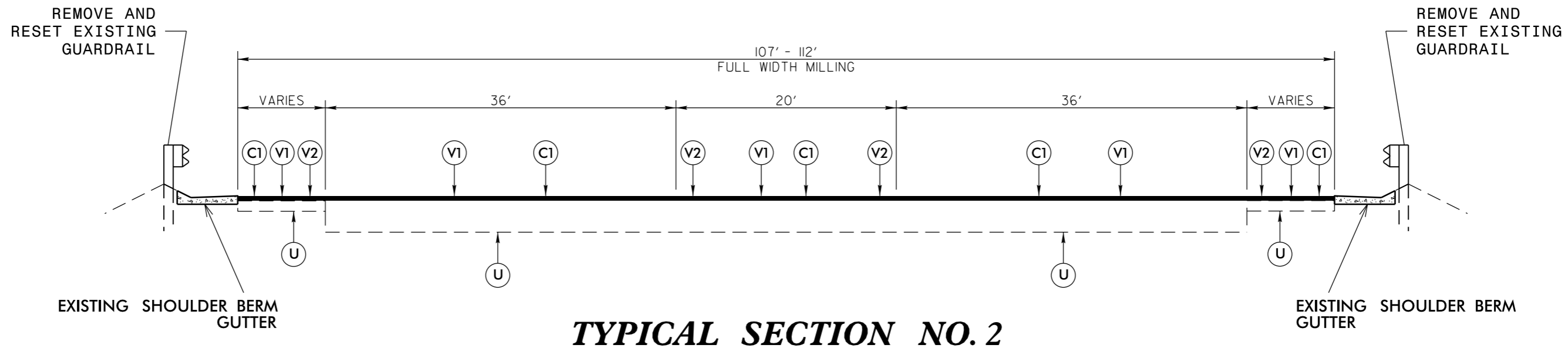


**DETAIL B**  
VARIOUS LOCATIONS

PAVEMENT SCHEDULE	
C1	PROP. APPROX. 3" ASPHALT CONCRETE SURFACE COURSE, TYPE S9.5C, AT AN AVERAGE RATE OF 168 LBS. PER SQ. YD. IN EACH OF TWO LAYERS
T	SHOULDER RECONSTRUCTION
U	EXISTING PAVEMENT
V1	MILLING ASPHALT PAVEMENT, 3" DEPTH
V2	MILLED RUMBLE STRIPS (ASPHALT CONCRETE)

**MADISON COUNTY**

PROJECT NO.	SHEET NO.	TOTAL NO.
52031.3.1	3	7



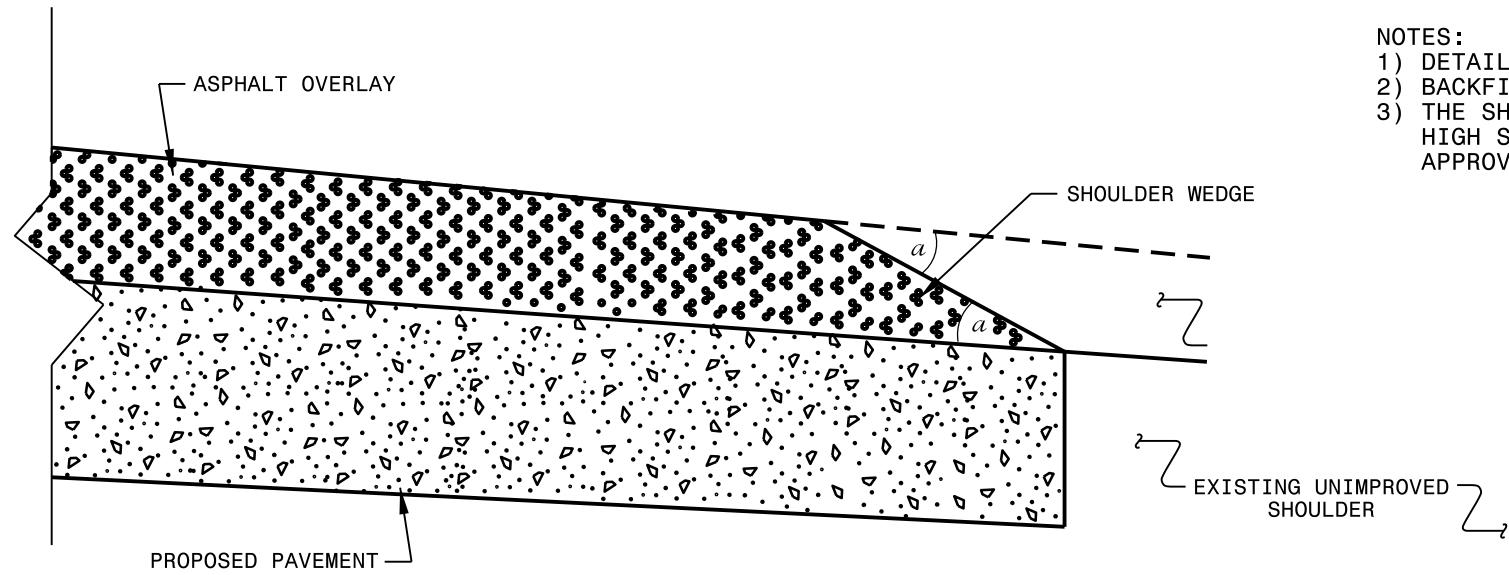
**DOUBLE FACED GUARDRAIL  
BETWEEN I-26 AND SR 1636**

PAVEMENT SCHEDULE	
C1	PROP. APPROX. 3" ASPHALT CONCRETE SURFACE COURSE, TYPE S9.5C, AT AN AVERAGE RATE OF 168 LBS. PER SQ. YD. IN EACH OF TWO LAYERS
U	EXISTING PAVEMENT
V1	MILLING ASPHALT PAVEMENT, 3" DEPTH
V2	MILLED RUMBLE STRIPS (ASPHALT CONCRETE)

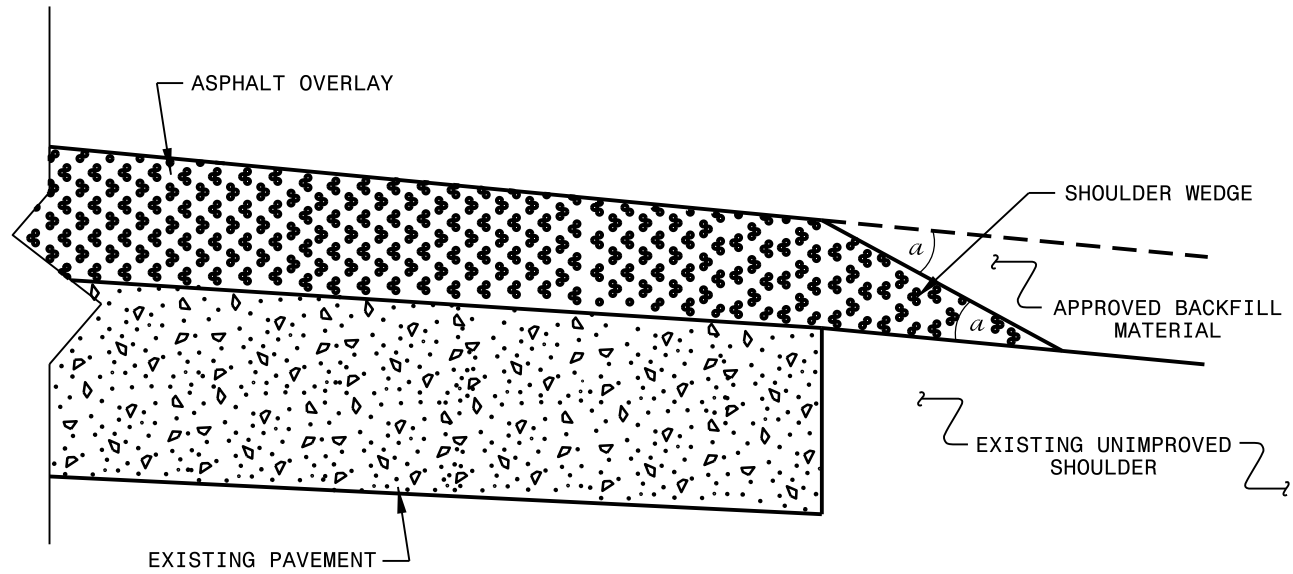
**MADISON COUNTY**

PROJECT NO.	SHEET NO.	TOTAL NO.
52031.3.1	4	7

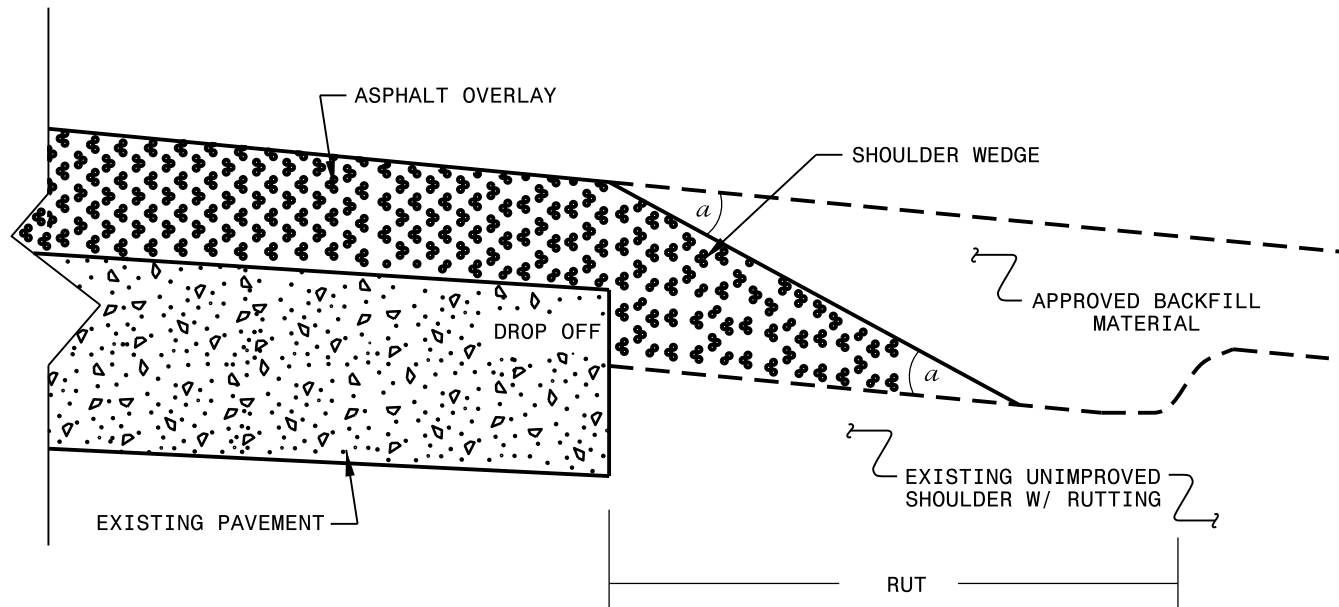
- NOTES:
- 1) DETAIL DOES NOT APPLY TO OGAFD AND ULTRA-THIN BONDED WEARING COURSE.
  - 2) BACKFILL SHOULDER WITH APPROVED MATERIAL.
  - 3) THE SHOULDER WEDGE DEVICE MAY BE DISENGAGED AT PAVED DRIVEWAYS, SIDE STREETS, HIGH SHOULDERS, AND OTHER LOCATIONS NOT FEASIBLE TO CONSTRUCT AS APPROVED BY THE ENGINEER.



**SHOULDER WEDGE DETAIL**  
 (Resurfacing Projects w/ Widening or  
 with Existing Paved Shoulder having no dropoffs)



**SHOULDER WEDGE DETAIL**  
 (Resurfacing Projects w/ NO Widening)



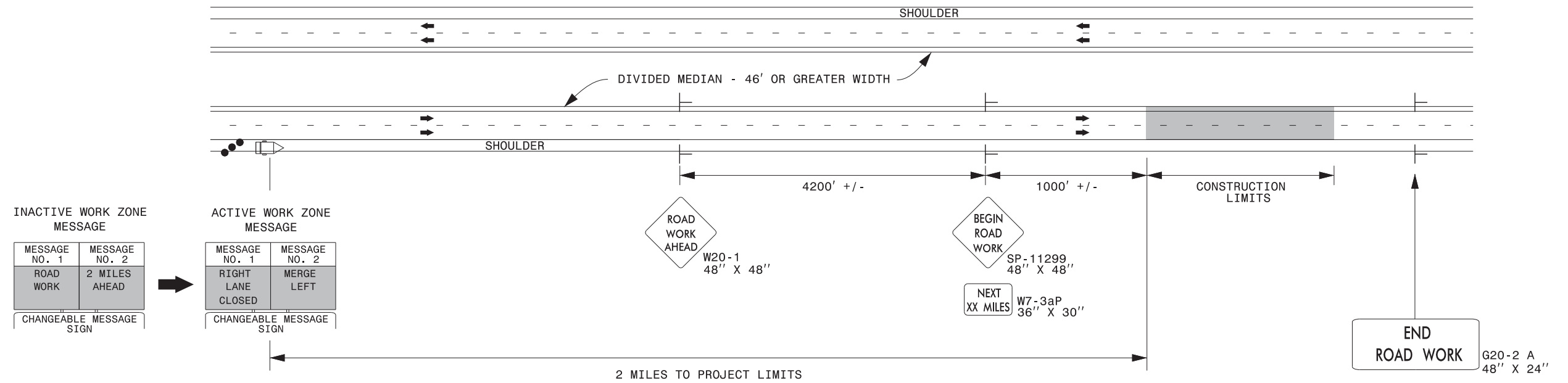
**SHOULDER WEDGE DETAIL**  
 (Resurfacing Adjacent to  
 Rutted Shoulder)

- SHOULDER WEDGE ANGLE = 30°

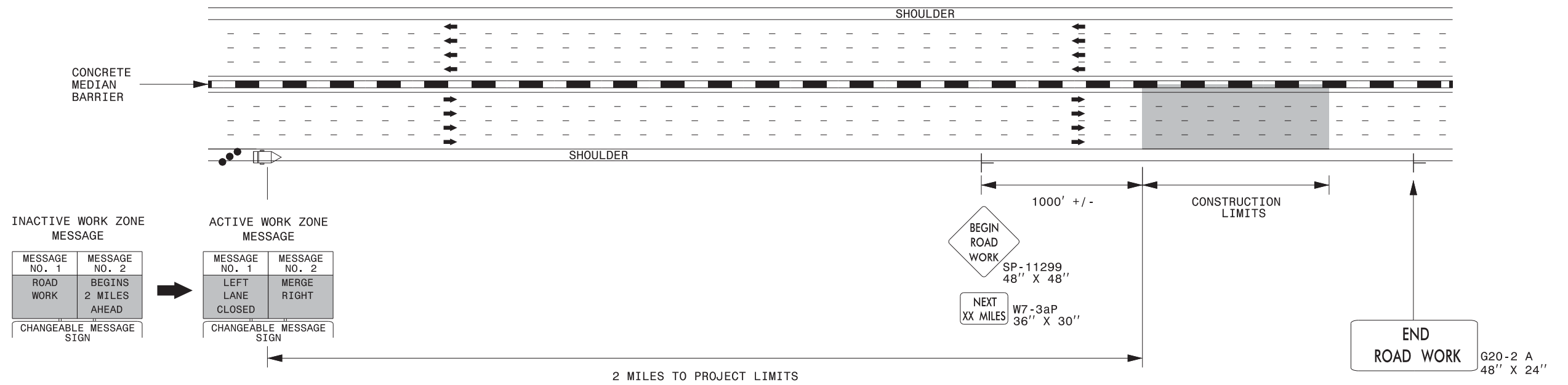
<b>CONTRACT STANDARDS AND DEVELOPMENT UNIT</b>	
Office 919-707-6950	FAX 919-250-4119
<b>SHOULDER WEDGE DETAILS</b>	
ORIGINAL BY: T.SPELL	DATE: 7-19-11
MODIFIED BY:	DATE: 2/2/16
CHECKED BY:	DATE:
FILE SPEC.: susr/details/stand/shoulderwedgedetail.dgn	

SYSTEMS DESIGN  
 USER NAME

## DIVIDED MEDIANS WITH WIDTHS 46' OR GREATER



## DIVIDED MEDIANS WITH WIDTHS LESS THAN 46' OR WITH PERMANENT MEDIAN BARRIER



### NOTES:

- 1) LATERAL CLEARANCE AT ALL SIGN LOCATIONS SHALL BE 6' AS MEASURED FROM THE EDGE OF PAVEMENT.
- 2) MOUNT SIGNS THAT ARE LARGER THAN 10 SQUARE FEET IN AREA ON TWO OR MORE WOOD OR U-CHANNEL SUPPORTS. PERFORATED SQUARE TUBING SUPPORT SYSTEMS MAY SUPPORT LARGER AREAS ON A SINGLE SUPPORT. FOLLOW MANUFACTURER'S RECOMMENDATIONS. THESE SYSTEMS SHALL BE NCHRP 350 COMPLIANT AND NCDOT APPROVED.
- 3) FOR MEDIAN WIDTHS LESS THAN 46' (MEASURED EDGELINE TO EDGELINE) USE THE BOTTOM DRAWING.
- 4) IF STATIONARY GENERAL WARNING SIGNS ARE USED, THEY WILL BE PAID FOR PER SECTION 104 OF THE NCDOT STANDARD SPECIFICATIONS AS EXTRA WORK.
- 5) INSTALL "ROAD WORK AHEAD" (W20-1) ALONG ENTRANCE RAMP 500' PRIOR TO RAMP TERMINAL, AND "END ROAD WORK" (G20-2a) AT THE END OF EXIT RAMP WITHIN THE WORK ZONE.
- 6) IF MILLED AREAS ARE NOT PAVED BACK BY THE END OF THE WORK DAY, PORTABLE SIGNS SHALL BE USED TO WARN DRIVERS OF THE PRESENT CONDITIONS. THESE ARE TO INCLUDE, BUT NOT LIMITED TO "ROUGH ROAD" W8-8, "UNEVEN LANES" W8-11, "GROOVED PAVEMENT" W8-15 w/MOTORCYCLE PLAQUE MOUNTED BELOW. THESE ARE TO BE DOUBLE INDICATED ON MULTI-LANE ROADWAYS WITH SPEED LIMITS 45 MPH AND GREATER AND WITH DIVIDED MEDIANS OF 46' OR GREATER. THESE PORTABLE SIGNS ARE INCIDENTAL TO THE OTHER ITEMS OF WORK INCLUDED IN THE TEMPORARY TRAFFIC CONTROL (LUMP SUM) PAY ITEM.

### LEGEND

- CHANGEABLE MESSAGE SIGN (CMS)
- STATIONARY SIGN
- DIRECTION OF TRAFFIC FLOW
- TRAFFIC DRUM



**RESURFACING ADVANCE  
WARNING SIGNS FOR  
HIGH SPEED FACILITIES  
≥ 60 MPH**

SIGN NUMBER: 11299

BACKG COLOR: Fluorescent Orange

DESIGN BY: WJ

CHECKED BY:

DATE: Jun 22, 2011

TYPE: B

COPY COLOR: Black

PROJECT ID: ALL

DIV: ALL

QUANTITY: SEE PLANS

SYMBOL	X	Y	WID	HT

SIGN WIDTH: 5'-6"

HEIGHT: 5'-6"

# SP 11299

PROJECT NO.	SHEET NO.	TOTAL NO.
52031.3.1	6	7

TOTAL AREA: 30.5 Sq.Ft.

BORDER TYPE: INSET

RECESS: 0.59"

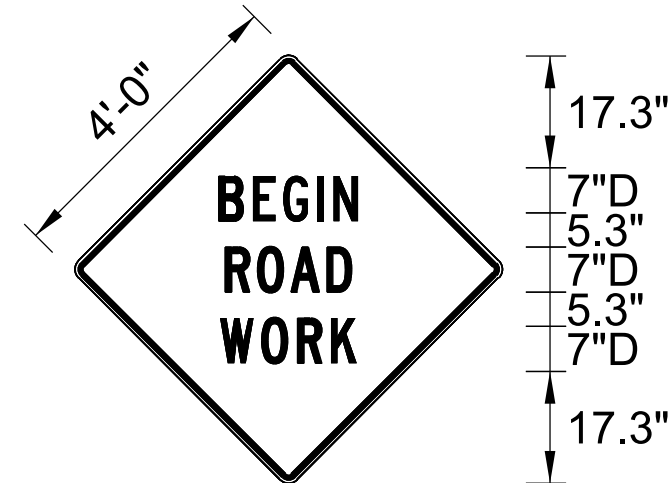
WIDTH: 0.75"

RADII: 1.38"

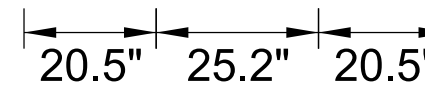
NO. Z BARS: N/A

LENGTH: N/A

MAT'L: 0.125" (3.2 mm) ALUMINUM



BORDER  
R=1.38"  
TH=0.75"  
IN=0.59"



### USE NOTES: 1,2

- Legend and border shall be direct applied black non-reflective sheeting.
- Background shall be Type VII, VIII, or IX (prismatic) fluorescent orange retroreflective sheeting.

Spacing Factor is 1 unless specified otherwise

### LETTER POSITIONS

Letter spacings are to start of next letter																	Series/Size	
																	Text Length	
		B	E	G	I	N												D 2000
	20.5	6	5.4	6.3	2.8	4.8	20.5											25.2
		R	O	A	D													D 2000
	21.4	5.8	5.9	7	4.8	21.4												23.5
		W	O	R	K													D 2000
	20.9	7.1	6.5	5.9	4.9	20.9												24.5

PROJECT NO.	SHEET NO.	TOTAL NO.
52031.3.1	7	7

### SUMMARY OF QUANTITIES

PROJECT NO	COUNTY	MAP NO	ROUTE	DESCRIPTION	TYP NO	LANES	LANE TYPE	FINAL SURFACE TESTING REQUIRED	WARM MIX ASPHALT REQUIRED	LENGTH MI	WIDTH FT	SHOULDER RECONSTRUCTION SMI	MILLING ASPHALT PAVEMENT, 3" DEPTH SY	ASPHALT CONC SURFACE COURSE, TYPE S9.5C TON	ASPHALT BINDER FOR PLANT MIX TON	MILLED RUMBLE STRIPS (ASPHALT CONCRETE) LF	ADDITIONAL GUARDRAIL POSTS EA	GENERIC GUARDRAIL ITEM REMOVE AND RESET EXISTING GUARDRAIL LF	INDUCTIVE LOOP SAWCUT LF
52031.3.1	Madison	1	I-26 EB & WB	FROM TENNESSEE STATE LINE TO BRIDGE NO. 548 OVER SR 1636	1,2	6	MD	NO	NO	0.11	72	0.07	7,560	1,400	83	2,460	25	1,280	330
TOTAL FOR PROJ NO. 52031.3.1										0.11		0.07	7,560	1,400	83	2,460	25	1,280	330
GRAND TOTAL										0.11		0.07	7,560	1,400	83	2,460	25	1,280	330

### THERMOPLASTIC AND PAINT QUANTITIES

PROJECT NO	COUNTY	MAP NO	ROUTE	DESCRIPTION	TYP NO	LANES	LANE TYPE	LENGTH	WIDTH	4413000000-E	4457000000-N	4510000000-N	4700000000-E	4815000000-E		4825000000-E	4847100000-E		4905000000-N
										WORK ZONE ADVANCE/ GENERAL WARNING SIGNING SF	TEMPORARY TRAFFIC CONTROL LS	LAW ENFORCEMENT HR	THERMOPLASTIC PAVEMENT MARKING LINES (12", 90 MILS) WHITE LF	PAINT PAVEMENT MARKING LINES (6") WHITE LF	PAINT PAVEMENT MARKING LINES (6") YELLOW LF	PAINT PAVEMENT MARKING LINES (12") WHITE LF	POLYUREA PAVEMENT MARKING LINES (6") YELLOW (HIGHLY REFLECTIVE ELEMENTS) LF	POLYUREA PAVEMENT MARKING LINES (6") WHITE (HIGHLY REFLECTIVE ELEMENTS) LF	SNOWPLOWABLE PAVEMENT MARKERS EA
52031.3.1	Madison	1	I-26 EB & WB	FROM TENNESSEE STATE LINE TO BRIDGE NO. 548 OVER SR 1636	1,2	6	MD	0.11	72	192	1	60	850	1,720	1,200	850	1,200	1,720	58
TOTAL FOR PROJ NO. 52031.3.1								0.11		192	1	60	850	1,720	1,200	850	1,200	1,720	58
GRAND TOTAL								0.11		192	1	60	850	1,720	1,200	850	1,200	1,720	58